

# **MQL5 Graphic Panel Contest by Investeo**

**09/12/10**

# Introduction

- Pure MQL5 solution, no DLLs
- Friendly tabbed animated interface
- Click and hide panel and tabs

GUI animation is available at

<http://www.youtube.com/watch?v=1qz8Gb--Y68>

# Graphic Panel modules

- DT single click trading panel
- Trading planner tab
- MTF pivot calculator
- MTF indicator monitor

# DT Trading Panel

- One click trading:  
increase/decrease  
position, reverse  
position, close position,  
show last n minutes  
volatility, risk and  
reward of open position

Demo:

<http://www.youtube.com/watch?v=ztVCPwnrUIQ>

EURUSD POSITION: NONE

RISK:  
NONE

REWARD:  
NONE

R/R RATIO:  
N/A

POSITION SIZE:  
0.0 LOTS

INCREMENT/DECREMENT POSITION:

STEP:  
0.01

LOTS:  
0.05

SLIPPAGE:  
0.00050

Buy

Sell

1.32 60<sup>0</sup>

1.32 61<sup>4</sup>

Volatility 1

min [pips] : 51

REVERSE

CLOSE

Quit

MQL5.com CONTEST PANEL by Investeo

# Trading Planner

- Interactive browsing through all found Fibo retracement levels and PIVOTs
- TP/SL setting by simply dragging a line up and down
- Trade plane available as ListBox (implemented CChartObjectListBox class)
- In could be used as sequential or non-sequential trading plan

# Trading Planner [2]

EURUSD POSITION: NONE

RISK: NONE      REWARD: NONE

R/R RATIO: N/A      POSITION SIZE: 0.0 LOTS

INCREMENT/DECREMENT POSITION:

STEP: 0.01    LOTS: 0.05    SLIPPAGE: 0.00050

Buy Sell

1.3260<sup>0</sup>    1.3261<sup>4</sup>

Volatility 1    min [pips] : 51

REVERSE    CLOSE

Quit

MQL5.com CONTEST PANEL by Investeo

Trading plan

1 UP

BUY 0.01@1.32898 SL 1.32362 TP 1.32362

BUY 0.01@1.32796 SL 1.32362 TP 1.32362

BUY 0.01@1.32696 SL 1.32362 TP 1.32362

BUY 0.01@1.32696 SL 1.32514 TP 1.32514

2

3 DOWN

INSERT    ADD

REMOVE    CLEAR ALL

Points of Interest    refresh    copy

UP

1.33220 4.236 M1 Fibo 65136

1.32958 2.618 M1 Fibo 65136

1.32898 pivot:M15:3

1.32796 1.618 M1 Fibo 65136

1.32721 pivot:M15:6

1.32696 1.000 M1 Fibo 65136

1.32634 0.618 M1 Fibo 65136

1.32615 0.500 M1 Fibo 65136

1.32596 0.382 M1 Fibo 65136

1.32572 0.236 M1 Fibo 65136

DOWN

Entry point: 1.32696    S/L: 1.32514    T/P: 1.33039

Action: BUY    Lots: 0.01    Step: 0.01

Demo available at <http://www.youtube.com/watch?v=amKnompBZTc>

# MTF Pivot calculator and browser

- Interactive pivot calculation and display, MQL5 version of web-based pivot calc:
  - <http://www.mypivots.com/calculators/pivot-point-calculator.aspx>
- Three formula sets: Classic, Woodie, Camarilla
- Visible pivot lines can be used by Trading Planner module

# MTF Pivot calculator and browser [2]

- Demo at <http://www.youtube.com/watch?v=Iv84l6eq6Rk>

### EURUSD POSITION: SELL

**RISK:**  
INFINITE  
**R/R RATIO:**  
N/A  
**INCREMENT/DECREMENT POSITION:**  
**STEP:** 0.01 **LOTS:** 0.05 **SLIPPAGE:** 0.00050  
   

1.3273<sup>6</sup>

1.3275<sup>1</sup>

**Volatility** 1 **min [pips] :** 9

MQL5.com CONTEST PANEL by Investeeo

	Formula	Point	Show	Timeframe	Formula Set
1	R4 PP + RANGE*3	1.32931	N	M5	Classic
	R3 PP + RANGE*2	1.32871	N		
	R2 PP + RANGE	1.32811	N		
2	R1 2*PP-L	1.32776	N		
	PP (H+L+C)/3	1.32751	N		
3	S1 2*PP-H	1.32716	N		
	S2 PP - RANGE	1.32691	N		
	S3 PP - RANGE*2	1.32631	N		
	S4 PP - RANGE*3	1.32571	N		

EURUSD,M5

8 Dec 2010 8 Dec 02:25

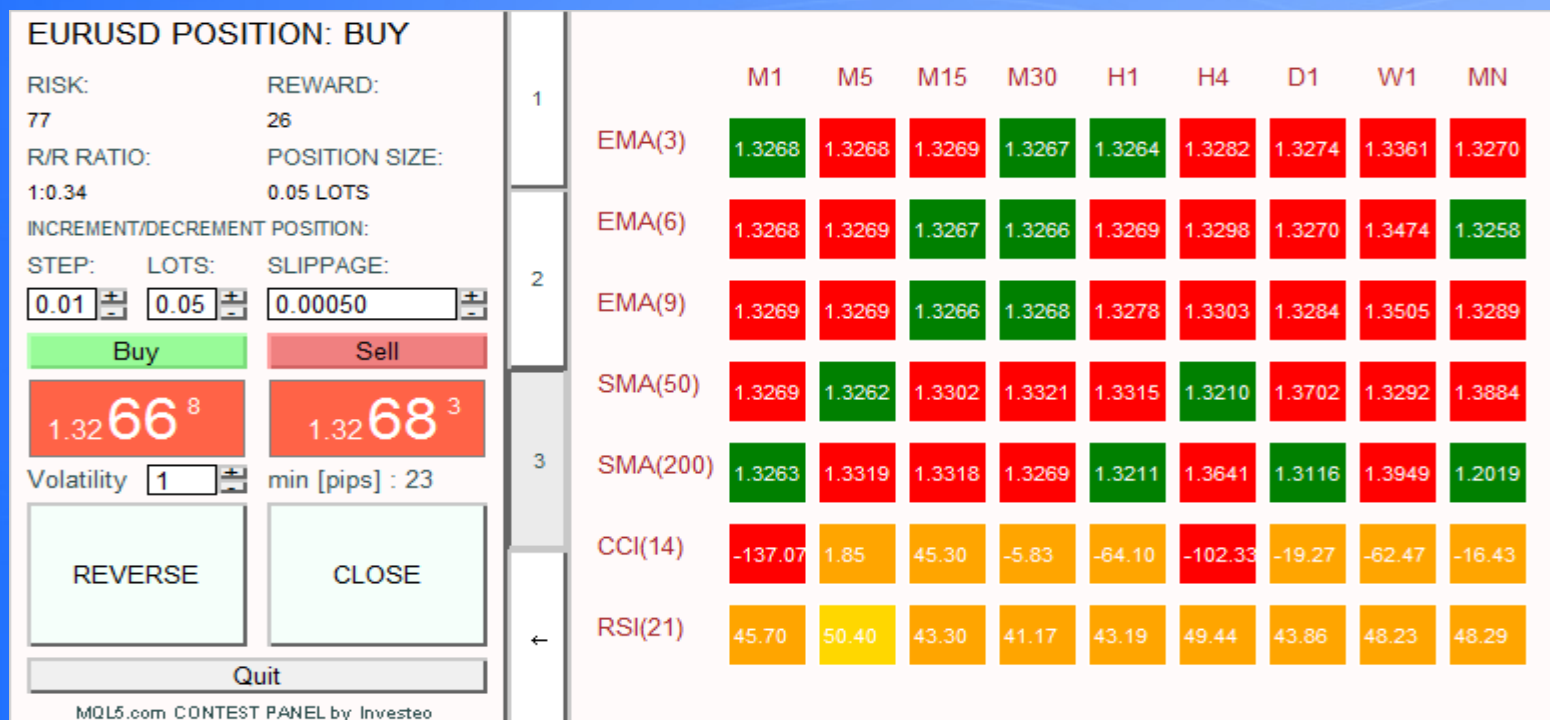


# MTF Indicator monitor

- Graphic monitoring of many indicator values in many timeframes
- May serve as reading of 'mood' of the market
- Easy to see how prices touch several EMA/SMA's in different timeframes

# MTF Indicator monitor [2]

2D table showing indicators and moving averages, demo at  
<http://www.youtube.com/watch?v=BDzjKK4ixzk>



**Thank you for attention :-)**